

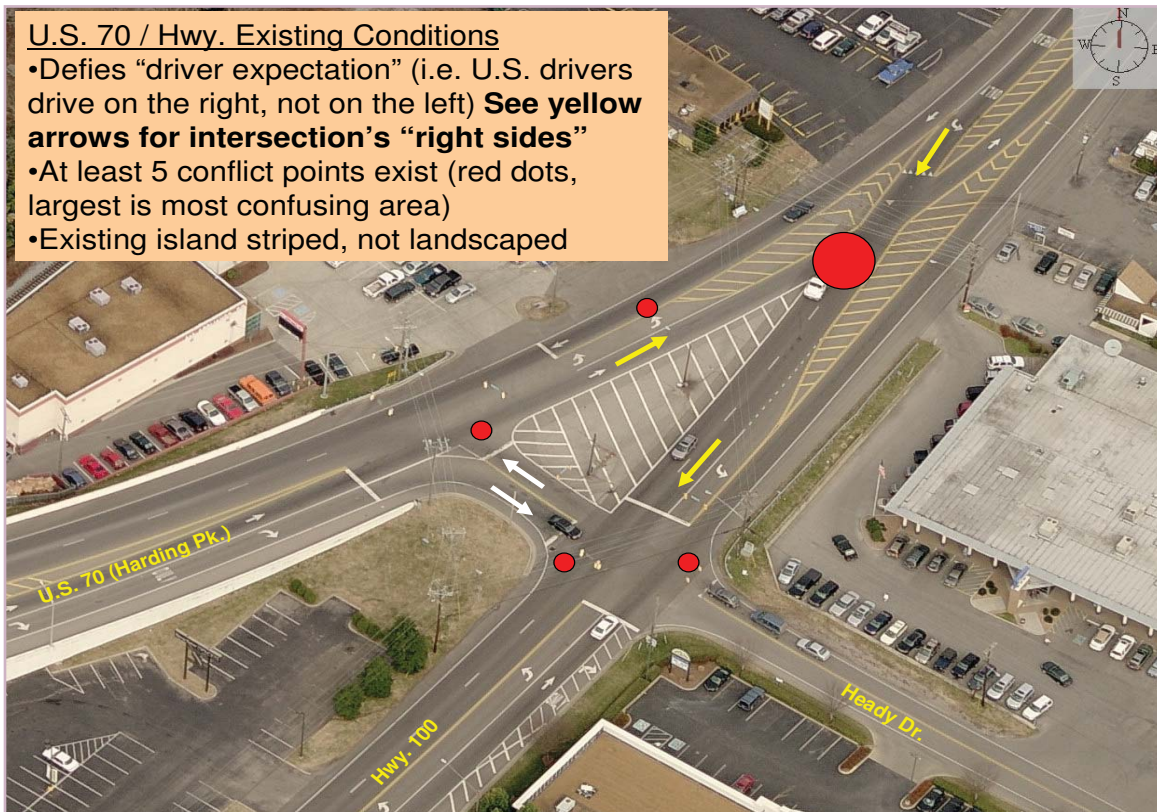
West Nashville Community Plan: 2009 Update

Chapter III: Transportation Plan

The conceptual figures below illustrate road re-alignments and improvements that may foster a more walkable center area for the Highway 70/Highway 100 split area. The figures complement the Community Character Policy for the area (07-T3-NC-02) found in Chapter II.

- **Proposal: Murphy Road/46th Avenue** (Major Street Plan)

Recommendation: Downgrade from a U4 (four-lane urban arterial) to a U2 (two-lane urban arterial). The street has 80 feet of right-of-way and 40 feet of pavement, enough for four travel lanes, yet traffic levels do not warrant four travel lanes. Additionally, this extra space is currently used for two eight-foot bike lanes and two 12-foot travel lanes. Eight feet is the same dimension needed for parallel parking, which currently occurs illegally in bike lanes. If the neighborhood needs parking, the street has enough room to re-stripe 46th Avenue and Murphy Road to accommodate one side of parallel parking, two bike lanes and two travel lanes. Planning Department staff recommends this configuration to provide for both parking and bike lanes while preventing illegal use of either.



- U.S. 70 / Hwy. Realigned 90° Intersection – #1**
- Establish 4-way signal with crosswalks, pedestrian islands
 - Use raised concrete median to separate north/east-bound U.S. 70 from south/west-bound U.S. 70 traffic (dark gray lines)
 - Landscape and/or better define medians, maintain U.S. 70 south/west slip lane (yellow arrows)
 - Sidewalks (gray lines)

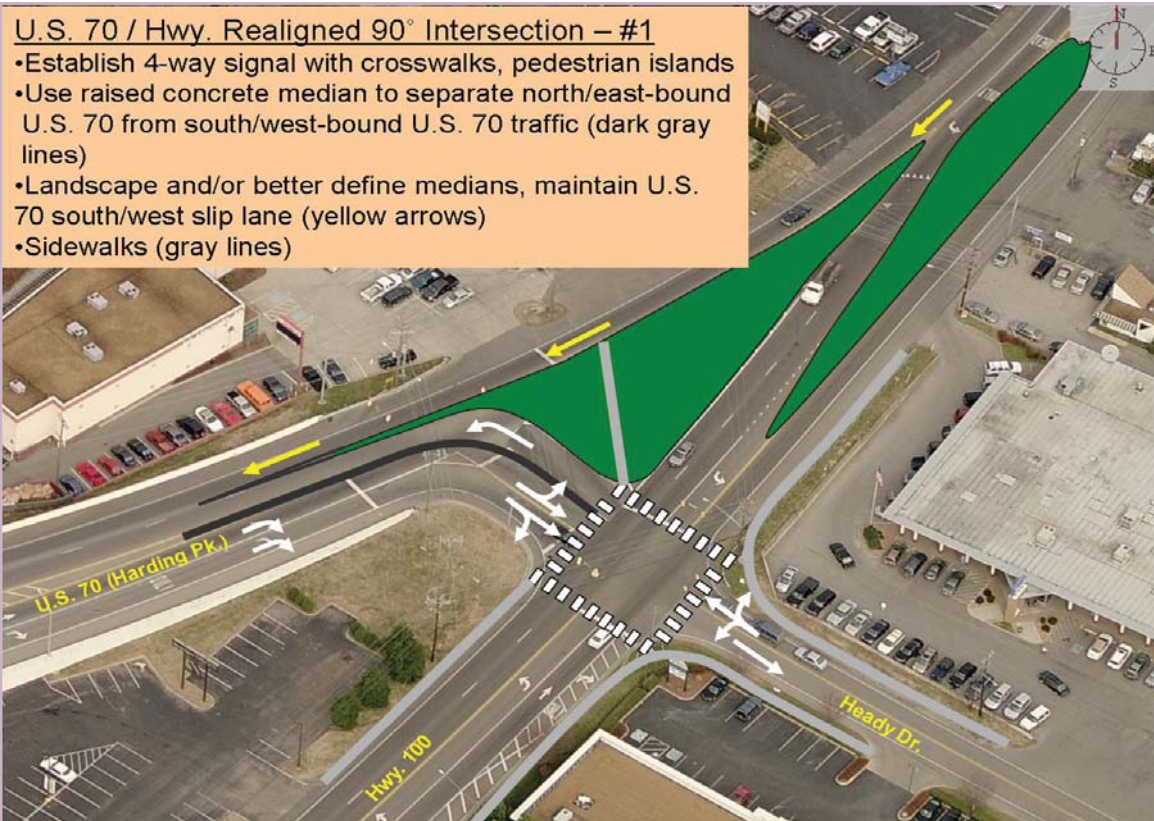


FIGURE 30

- U.S. 70 / Hwy. Realigned 90° Intersection - # 2**
- Establish 4-way signal with crosswalks
 - Use raised concrete median to separate north/east-bound U.S. 70 from south/west bound U.S. 70 traffic (dark gray line)
 - Shared access (blue arrow)
 - Sidewalks (gray lines)

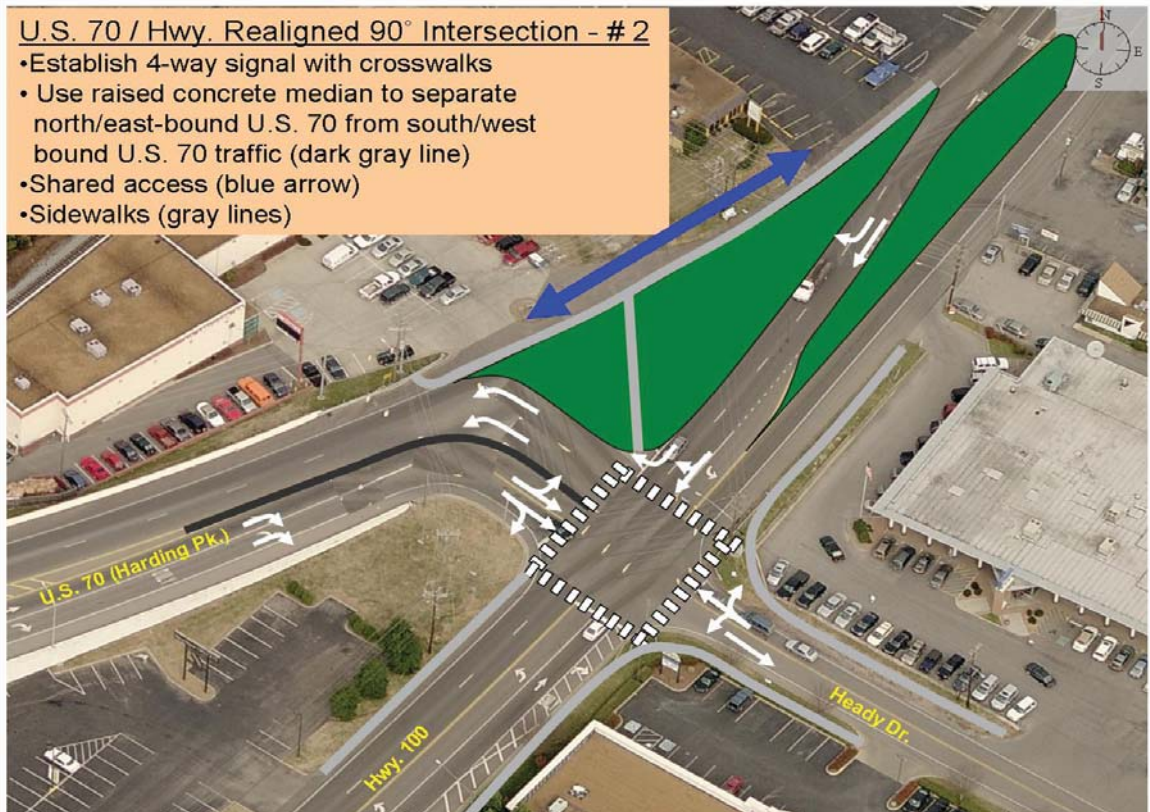


FIGURE 31

FIGURE 32

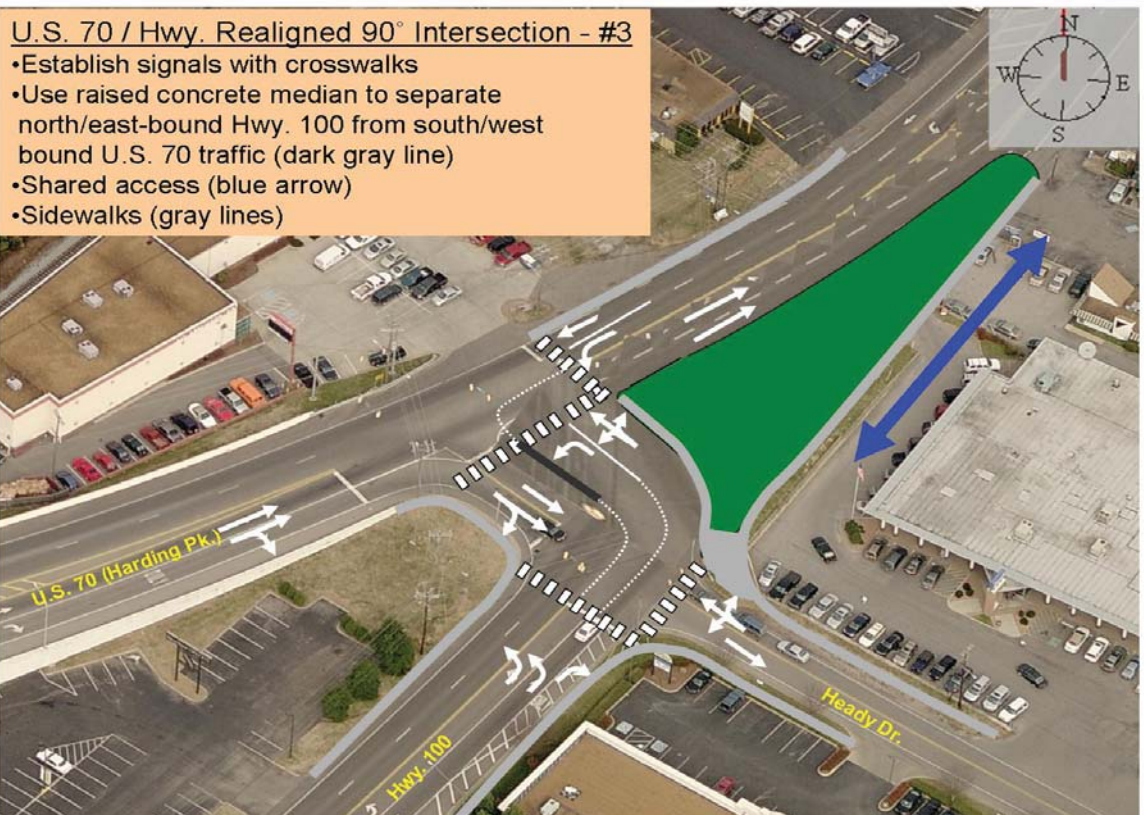


FIGURE 33

